



Value Proposition for Technical Authority

J. (Jay) Bahlis, Ph.D., P. Eng., 1 514 745-4010 x 1021, bahlis@bnhexpertsoft.com

BNH Training Management System ADVISOR Enterprise produces well designed training plans, and highly effective training strategies that are efficient, and always up to date. Moreover, ADVISOR generates an audit trail to support analysis/ recommendations, and complies with multiple standards including CFITES, JSP 822, MIL-HDBK-29612-2A, AETC Handbook 36-2203, TRADOC Pamphlet 350-70-6, Australian Defence Model, AIA, S6000T, and EASA. ADVISOR has a proven track record and has been successfully implemented in the US, UK, Canada, Australia, Netherlands, Singapore, and Brazil <https://www.bnhexpertsoft.com/our-clients/>. In business since 1987.

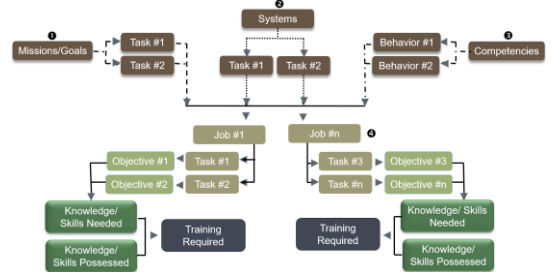
How Can We Help:

- Speed Mission, System, Competency & Job Task Analysis.
- Simplify Media/Option Analysis.
- Optimize Training Simplify the Management of Control Documents.
- Improve Training Efficiency.

BNH Training Management System ADVISOR Enterprise

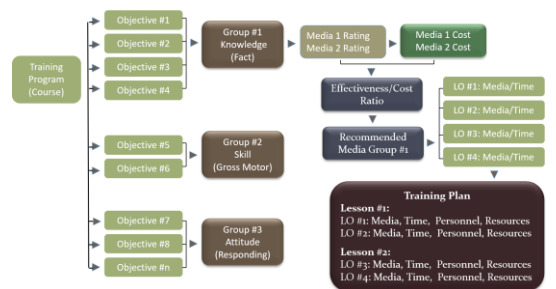
Speed Collective & Individual Training Analysis as follows:

- Configure in line with needs – i.e., conduct mission system, competency, and/or job task analysis.
- Automate Difficulty, Importance and Frequency (DIF) analysis to identify and prioritize tasks that require training.
- Define Knowledge, Skills, & Attitudes (KSAs) needed to perform each task.
- Identify training requirements by comparing desired to possessed KSAs.
- Generate compliant reports in single click. These include Master Task List, Master Training Task List, Job Task Analysis Report, Training Requirements Report, Formal Training Report, Qualification Standards Report, & more.



Simplify Media/Option Analysis as follows:

- Quickly identify & rate viable delivery options by mapping instructional design requirements for each objective to the capability of each media.
- Store common measures such as hourly rates of developers, instructors, & support staff; equipment, simulators, and facilities cost in templates to quickly forecast and compare personnel/resource and costs of viable delivery options over program life cycle.
- Generate compliant reports in single click. These include Objectives & Media Analysis Report, Cost Analysis Report, Training Plans, Qualification & Standards Report & much more.



Simplify the Management of Control Documents as follows:

- Track changes made by each user including what changes were made and when.
- Assign each analysis a version number and archive.
- Compare two versions of the analyses to identify all records (i.e., missions, systems, competencies, jobs, tasks, knowledge, skills, attitudes, etc.) that have been added, deleted, or modified.



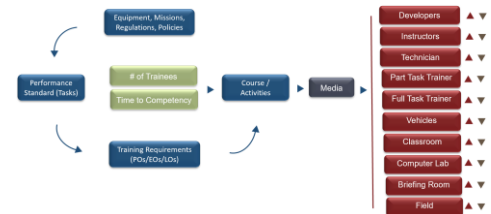
Improve Training Efficiency. ADVISOR establishes benchmarks to identify the most efficient training solution and demo its' value. ADVISOR transforms information into Key Performance Indicators (KPI). Achieved through a digital model that captures courses/activities length, throughput, number & type of personnel/resources needed for each lesson/exercise, Rough Order Magnitude (ROM) costs, and so forth. With vital data in hand, the effectiveness and efficiency of current training programs can be revealed. This includes gaps, duplication, & unnecessary training; cost per course/job; time to competency; total number of personnel/resources needed; etc. More importantly, venues to improve training efficiency are uncovered, & the value of proposed solutions demonstrated, as follows:

- Identify viable delivery options for each lesson/activity within each course based on instructional requirements, content, audience & constraints.
- Forecast & compare the costs, personnel/resource requirements of viable delivery media to current, to identify the most cost-effective options.
- Uncover & minimize training duplication – i.e., similar knowledge, and skills covered within multiple courses.
- Conduct what-if scenarios to assess the overall impact of various blends of delivery options based on planned courses/activities & throughput.
- Assess the potential impact of recommended solutions on KPIs, namely training effectiveness, training costs, & training time.



Try Before you Buy

Forecast Training Costs & Personnel/Resource Requirements. This includes the number and type of developers, instructors, administrators, managers and support staff, equipment, simulators, extended reality, facilities, etc., needed for each location and any time-period. ADVISOR forecasts costs, personnel and resources based on throughput, courses/activities length, number of trainees per lesson, personnel/ resources needed for each activity, and so forth.



Maintain Training Effectiveness over Program Life. As missions, jobs, equipment, policies & regulations change, the alignment of training with operational requirements gradually deteriorates. ADVISOR quickly uncovers the potential impact of changes to missions, jobs, equipment, systems, policies, and regulations on training courses/activities. By quickly realigning training with requirements, training effectiveness & efficiency can be preserved; & high performance maintained.

Learning Objectives	KSA	PO/EO	Task	Job
Analyze Mission Tasking	Analyze Mission Tasking	Preparing mission plan	Prepare mission plan	BFT
Adhere to regulations	Adhere to regulations	Conduct mission brief	Conduct mission brief	BFT
Low Level Awareness	Do not support BFT KSA, PO, EO or Task			BFT

Job	Task	PO/EO	KSA	LO	Lesson	Course
BFT	Fuel aircraft	Fuel aircraft	Calculate fuel requirements	Calculate fuel requirements	Lesson 3	BFT Course
BFT	Employ hand signals	Employ hand signals	Adhere to regulations	Not addressed. May indicate a gap.		
BFT	Carry-out pre-takeoff checks	Carry-out pre-takeoff checks	Operate aircraft controls	Operate aircraft controls	Lesson 5	BFT Course

ADVISOR uncovers gaps and training that is no longer relevant